

Diary of events at two Lesser Spotted Woodpecker territories on the Norfolk/Suffolk border.

All nest watches were made from a safe distance. Courtesy of our most experienced nest watcher Mat Shore and observers Keith Bilverstone, Ricky Cleverly, J Gaskell, Ed Keeble, J Theobald & David Walsh.

Date	Site A	Site B
Jan - Feb	♂ & ♀ heard calling and drumming on many dates	LSW on site in late Feb
Mar 22	♂ calling and feeding	
Mar - Apr		Calling and drumming birds seen by many birdwatchers
Apr 2	♂ and ♀ calling and feeding. Excavation found in willow with some woodchips	Apr 4: ♂ excavating cavity in a dead poplar
Apr 13	Calling bird but no activity at hole in Willow after a long watch	♂ working on a new cavity in a different area
Apr 24	MS found ♂ and ♀ visiting a new completed cavity in birch on 2hr watch	
Apr 25	1 changeover seen during long watch, possible incubation	
May 2	Incubating with ♂ and ♀ changeover. GSW showed interest in the hole but chased off by ♀ LSW	Possible new nest found. ♂ and ♀ seen excavating deep inside cavity
May 8	Nest contents checked with camera. ♀ incubating 3+ egg. GSW nest 80m away had 6 eggs	
May 15	♂ and ♀ feeding young & removing faecal sacs during 2 hour watch	Nest hole has been opened by a GSW but LSW ♀ still calling and drumming in area
May 22	♂ bringing caterpillars. Nest check -two small young	New nest cavity found by MS, 250m from first site. ♂ & ♀ change over seen after 70 min
May 24	♂ feeding young, 12 times in 80 mins watch, plenty of food	♂ and ♀ changing over at nest – 3 times in 3 hr watch
May 29	Two well developed ♂ chicks, see photo. Nearby GSW nest had 6 chicks about to fledge	♀ seen at nest
May 31	One chick already fledged, one about to leave the nest	♂ and ♀ feeding young
June 6		♂ and ♀ feeding young
June 17		Young still being fed
June 19		♂ chick fledged with adult ♀, two chicks ♂ & ♀ still in nest. 8 hr watch
June 20		Chicks being fed in nest by ♂ only
June 22		♂ & ♀ Chicks still in nest, fed exclusively by agitated ♂ adult.
June 23		remaining ♂ chick fledged at 09.00 and led away by adult ♂.

Key ♂ = male LSW, ♀ = female LSW

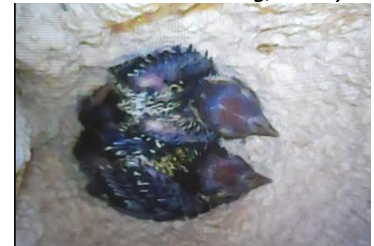
Mat Shore and the team watched these and other nests for over 500 hours taking detailed notes of the behaviour of the birds, the number of visits and the type and range of food brought for the chicks. This information is part of our long term studies to understand what is affecting breeding success



Site B, Male excavating, 4th April



Female LSW incubating, 8 May



Site A, 2 small young, 22 May



Site A, 2 male chicks, 29 May



Site B, male feeding 15 June

